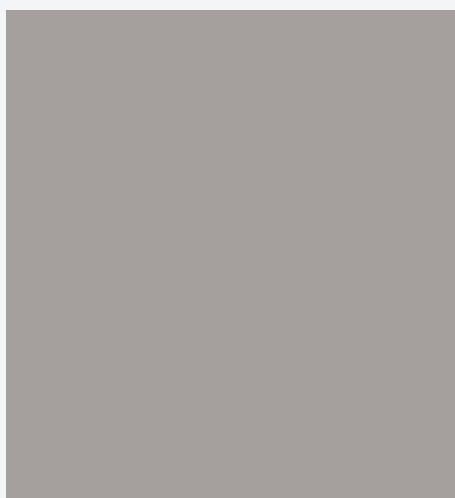




香港中文大學
The Chinese University of Hong Kong



CUHK INSTITUTE OF HEALTH EQUITY
香港中文大學健康公平研究所



ANNUAL REPORT

年報

2020 - 2021

CUHK Institute of Health Equity
香港中文大學健康公平研究所



CONTENTS

3 The Institute

7 Overview of Our Work

Reporting period: 1 January 2020 – 31 July 2021

THE INSTITUTE



Establishment of the Institute

December 2018

CUHK invited Prof. Sir Michael Marmot, Director of the Institute of Health Equity at University College London (UCL IHE), to deliver a lecture on 'Health Equity and Sustainable Development'.



May 2019

Prof. Sir Michael Marmot visited Hong Kong for research collaboration with CUHK academics and discussion to establish an institute on health equity with senior management of CUHK.

October 2019

CUHK appointed Prof. Sir Michael Marmot as Visiting Professor under the 'VC Distinguished Visiting Professor Scheme'.

January 2020

The Institute of Health Equity was established with the funding support from CUHK. UCL IHE is a collaborative partner to the Institute.



CUHK INSTITUTE OF HEALTH EQUITY
香港中文大學健康公平研究所

The CUHK Institute of Health Equity is established in January 2020 with Prof. Jean Woo, Prof. Sir Michael Marmot and Prof. Eng-kiong Yeoh as Co-directors. The University College London Institute of Health Equity is the collaborative partner of the Institute.

Vision

The Institute aspires to establish CUHK as a leading institution in promoting health equity studies in the Asian region.

Mission

The Institute endeavours to examine and understand issues of health equity in Hong Kong, inform government policies and intervention programmes to improve health equity of Hong Kong, and establish a network for the Asian region.

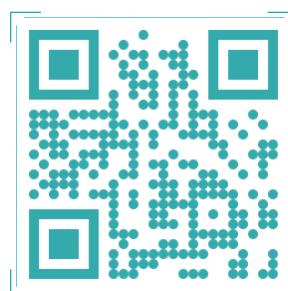
Logo

The two intertwining rings symbolizes intersectionality of different social factors that interconnect with each other, while the transitional gradient of color of the two rings represents the socioeconomic gradient in health, which is a central concept to understanding and achieving health equity.



CUHK INSTITUTE OF HEALTH EQUITY
香港中文大學健康公平研究所

Video



Steering Committee

Chairman: Pro-Vice-Chancellor of Research (ex officio)
Professor Mai Har Sham

Members: Dean, Faculty of Medicine (ex officio)
Professor Francis K.L. Chan

Dean, Faculty of Social Science (ex officio)
Professor Chi-yue Chiu

Co-Directors, CUHK Institute of Health Equity (ex officio)
Professor Jean Woo
Professor Eng-kiong Yeoh

Secretary: Functional Manager, CUHK Institute of Health Equity (ex officio)
Mr. Wai-tong Richard Lee

Executive Committee

The Institute has established an Executive Committee to oversee the administration of activities and affairs of the Institute.

Directorship and Affiliated Members

Co-directors

Prof. Jean Woo Prof. Sir Michael Marmot Prof. Eng-kiong Yeoh

Associate Directors

Prof. Hung Wong Prof. Roger Chung

Affiliated Members

Prof. Samuel Wong Dr. Ning Fan

OVERVIEW OF OUR WORK



Raising Public Awareness

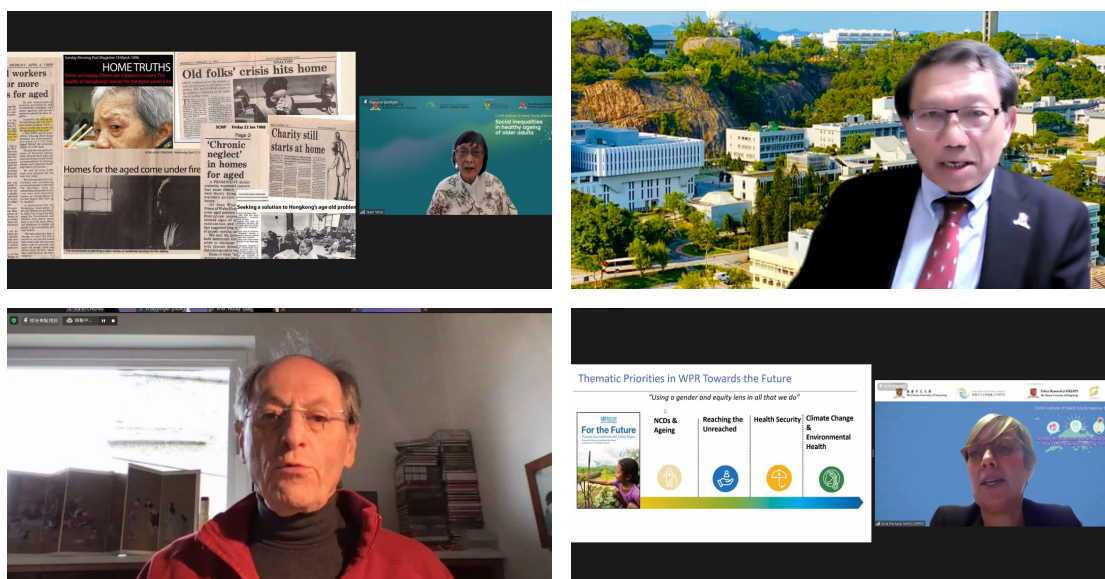
Press Conference



The institute has announced findings on how unaffordable housing worsens physical and mental health of Hong Kong people and the mediating role of relative deprivation, which is the first of its kind study in Asia, to the public in 2020.

In 2021, the Institute presented initial findings of health equity situation in Hong Kong and the need to reduce socio-economic inequalities in health through a press conference.

Webinar Series



Policy Research @ HKIAPS
The Chinese University of Hong Kong



Centre for
Health Systems &
Policy Research
醫療體系及政策研究所



**University
of Glasgow**

**Department of Paediatrics,
CUHK**

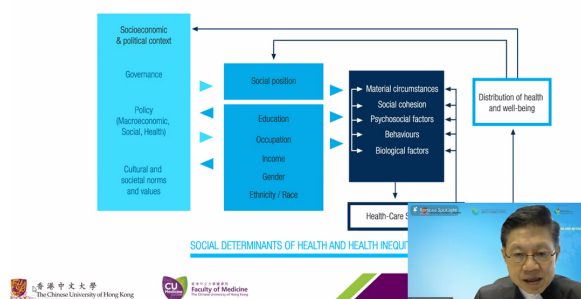


香港中文大學
賽馬會老年學研究所
CUHK Jockey Club Institute of Ageing

A series of webinars comprising eight sessions has been held from Nov 2020 to May 2021 to highlight various pressing topics related to health equity such as COVID-19 pandemic, mental health, gender and housing. Throughout the webinars, over 600 participants have benefited from insightful views of 24 experts from 9 universities.

Symposium and Student Seminar

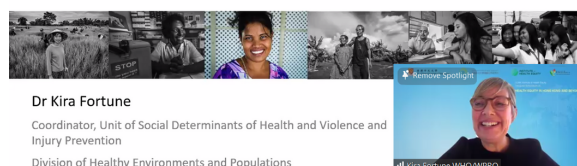
Social Determinants of Health and Health Inequalities



Gender and Health Equity

CUHK Institute of Health Equity
Inaugural Symposium on Health Equity in Hong Kong and Beyond

27 May 2021



Dr Kira Fortune

Coordinator, Unit of Social Determinants of Health and Violence and Injury Prevention
Division of Healthy Environments and Populations

The Inaugural Symposium “Health Equity in Hong Kong and Beyond” was held on 27 May 2021 in which experts from UCL IHE, World Health Organization, National Taiwan University, Seoul National University and University of Tokyo presented significant health equity studies and discussed the relevance of health equity studies to Hong Kong. The symposium attracted over 150 participants from government, academia, medical and social service personnel and business sector.



A Student Seminar on Health Equity was held on 28 May 2021 which provided a valuable opportunity for postgraduate students from different disciplines to present their research projects and exchange with health equity experts.

Social determinants of health

- In Hong Kong, income security is a major issue for older adults
- In a 2016 report, HK ranked 62nd out of 97 countries or territories in income security
- There are 3 main pillars for income for older adults in HK (Lee 2016):
 - Public non-contributory schemes:
 - Comprehensive social security allowance (CSSA)
 - Old age allowance (OAA)
 - Old age living allowance (OALA)
 - Mandatory provident fund (MPF) (implemented in 2000)
 - Personal savings and family support

Lee, S. Y., & Chou, K. L. (2016). Trends in elderly poverty in Hong Kong: A decomposition analysis. *Social Indicators*

作為一名前線社工的反思：
在長者健康面前，何之為公平？

CUHK Institute of Health Equity
Student Seminar on Health Equity

Definitions

- Domestic work**
"work performed in or for a household or households"
- Domestic worker**
"any person engaged in domestic work within an employment relationship"
- Formal work vs. Informal work**
 - Signed contract
 - Minimum allowable wage
 - Local laws and regulations

CUHK
CUHK Institute of Health Equity
CUHK Jockey Club Institute of Ageing
CUHK Department of Social Work
CUHK School of Social Sciences
CUHK School of Public Health
CUHK School of Nursing
CUHK School of Management
CUHK School of Education
CUHK School of Architecture
CUHK School of Design
CUHK School of Engineering
CUHK School of Business
CUHK School of Law
CUHK School of Medicine
CUHK School of Dentistry
CUHK School of Optometry
CUHK School of Podiatry
CUHK School of Physiotherapy
CUHK School of Occupational Therapy
CUHK School of Speech and Hearing Sciences
CUHK School of Music
CUHK School of Theatre and Dance
CUHK School of Journalism and Mass Communication
CUHK School of Creative Arts
CUHK School of Environmental and Planning
CUHK School of Architecture
CUHK School of Design
CUHK School of Engineering
CUHK School of Business
CUHK School of Law
CUHK School of Medicine
CUHK School of Dentistry
CUHK School of Optometry
CUHK School of Podiatry
CUHK School of Physiotherapy
CUHK School of Occupational Therapy
CUHK School of Speech and Hearing Sciences
CUHK School of Music
CUHK School of Theatre and Dance
CUHK School of Journalism and Mass Communication
CUHK School of Creative Arts
CUHK School of Environmental and Planning

The Institute collaborated with CUHK Department of Social Work and CUHK Jockey Club Institute of Ageing to conduct a joint symposium in which students and graduates from the social work discipline learnt about health equity issues and their relevance to practice.

Outreach

The Institute endeavors to promote messages of health equity to different stakeholders. As COVID-19 pandemic has wide-ranging effects on health, the Institute was invited to share insights and views by various organizations internally and externally. CUHK units included Office of University General Education, The Hong Kong Chapter of the United Nations' Sustainable Development Solutions Network, Policy Research@Hong Kong Institute of Asia-Pacific Studies and campus newsletter. Talks were given to student leaders in a virtual camp organized by the Hong Kong Federation of Youth Groups Leadership Institute. Education and raising public awareness efforts were made to the general public through local media such as Mingpao, HKET TOPick, Radio Television Hong Kong and SOOO Radio.



圖3-1



香港政府於10月20日公布香港7至9月的失業率（經季節性調整）為6.4%，是16年來的新高。國泰航空集團則於翌日宣布重組及大規模裁員計劃，第一階段削減約9500個職位。失業問題再次引起社會的討論，大眾關注失業率及就業不足率會否繼續上升，亦希望找出可以減低失業及開工不足問題的方法。然而，本文不會就失業及就業不足作出長遠的預測，因為海外疫情再次上升，而本地疫情未來亦存在眾多不確定的因素。筆者希望藉仔細回顧自2019年至今，失業、開工不足的轉變，以了解近期勞動力市場的變化趨勢，從而揭示香港現時面對的失業及就業不足問題的性質及其嚴重性。認清問題的性質及根源，才能正本清源制定有效的政策與措施。

政府公布的失業及開工不足人數均以3個月的平均數來計算和發表，較難顯示有關狀況短期及即時的變化，未及了解疫情以及政府對策的即時效果；筆者根據統計處公布的3個月平均數，自行推算出按月的失業率及開工不足率。圖1及圖2顯示香港按月的失業率（未經季節性調整）、失業人口由2019年1月至2020年9月的變化。按月的失業率在2019年下半年一直維持於2.9%至3.3%之間，稍高於上半年的2.5%至3.1%之間；2020年1月份，香港失業人口為12.14萬，失業率為3.1%。

Building an Asian Network



The Asian Network has been established to examine health inequality issues in Asia and beyond through comparative analysis. It comprises academics from National Taiwan University, Seoul National University, University College London and the University of Tokyo. While social determinants of health have been extensively documented in Europe, the Americas and Eastern Mediterranean regions, there is relatively little focus in Asia economies. The network will have the ability to examine social determinants of health in greater detail and to determine whether there may be factors distinctive to Asia.

Assess Health Equity and Identify Social Determinants of Health

- To understand the pandemic's impact on health equity, the institute initiates a research study to assess the relationship of Hong Kong people's physical and psychological health, exposure risk, economic as well as social outcomes among different groups of socio-economic position with the epidemic.
- The first Health Equity Report "Build back fairer: reducing socio-economic inequalities in health in Hong Kong", which is in progress, will focus on the unequal distribution of material conditions across the society, disparities between generations and how these lead to inequalities in health in Hong Kong. A briefing note on key findings has been prepared and distributed to stakeholders such as Government, medical and social sector, academia and think tanks, with feedback from Food and Health Bureau and others.
- The institute obtained a grant from Worldwide Universities Network and took the leading role to coordinate with researchers from 8 universities on a research project titled "Health & Social Impact of the COVID-19 Pandemic on Young People across the Socioeconomic Ladder: A Cross-Country Comparative Study".

Award & Publication

Chen S, Wang J, Zhu J, Chung RY, Dong D. Quality of life and its contributors among adults with late-onset Pompe disease in China. *Orphanet Journal of Rare Diseases*. 2021 May 1;16(1):199. doi: 10.1186/s13023-021-01836-y.

Chung GKK, Lai FTT, Hung H, Yeoh EK, Chung RY. Differential educational patterning of cardiometabolic risks between women and men among community-dwelling Chinese adults in Hong Kong: the mediating role of obesity. *Public Health Nutrition*. 2021:1-12. DOI:10.1017/S1368980021002044

Chung RY, Chung GK, Marmot M, Allen J, Chan D, Goldblatt P, Wong H, Lai E, Woo J, Yeoh EK, Wong SYS. COVID-19 related health inequality exists even in a city where disease incidence is relatively low: a telephone survey in Hong Kong. *J Epidemiol Community Health* 2021;75:616-623.

Chung RY, Li MM. Anti-Chinese sentiment during the 2019-nCoV outbreak. *Lancet*. 2020;395(10225):686-687. doi:10.1016/S0140-6736(20)30358-5

Chung RY, Marmot M, Mak JK, Gordon D, Chan D, Chung GKK, Wong H, Wong SYS. Deprivation is associated with anxiety and stress. A population-based longitudinal household survey among Chinese adults in Hong Kong. *J Epidemiol Community Health* 2021;75:335-342.

Chung RYN, Marmot M. People in Hong Kong Have the Longest Life Expectancy in the World: Some Possible Explanations. *NAM Perspectives*. 2020. DOI: 10.31478/202001d

Hung HHY, Chan EYY, Chow EYK, Chung GKK, Lai FTT, Yeoh EK. Non-skilled occupation as a risk factor of diabetes among working population: A population-based study of community-dwelling adults in Hong Kong. *Health & Social Care in the Community*. 2021. <https://doi.org/10.1111/hsc.13415>

Wu Y, Yan X, Dong D, Chung RY, Yeoh EK. Equitable exit strategy is required: lessons learnt from Hong Kong's current resurgence of local outbreaks among individuals from highly deprived neighbourhoods. *J Epidemiol Community Health*. 2020. DOI: 10.1136/jech-2020-215347

Wu Y, Yan X, Zhao S, Wang J, Ran J, Dong D, Wang M, Fung H, Yeoh EK, Chung RY. Association of time to diagnosis with socioeconomic position and geographical accessibility to healthcare among symptomatic COVID-19 patients: A retrospective study in Hong Kong. *Health & Place*. 2020 Oct 17;66:102465. doi: 10.1016/j.healthplace.2020.102465.

Yu J, Sumerlin TS, Goggins WB, Dong D, Chung RY, Kim JH. First- and second-hand alcohol-related harms among urban Chinese: A population-based study from Hong Kong. *Drug and Alcohol Review*. 2021 Jun 29. doi: 10.1111/dar.13339.

- The institute has obtained a grant from the Worldwide Universities Network Research Development Fund 2020.
- Dr. Gary Chung, postdoctoral fellow of the institute, has been honoured with RGC Postdoctoral Fellowship Scheme 2021/22.



